



Carson Valley Trails Association

2016 Trail Operations Overview 2017 Work Plan

2016 Overview-Bently Heritage Trail:

- ✓ The trail owner, Bently Ranch has renamed the Bently-Kirman Tract Trail to the Bently Heritage Trail. Maps, brochures, website information and other media were updated.
- ✓ A new trailhead kiosk was installed along with a banner, information panel and trail map.



New kiosk and information

- ✓ An Eagle Scout completed his project with family and troop members, building a 35-foot section of boardwalk. This section was added onto the existing 60-foot section of boardwalk located on the south loop. The boardwalk crosses a low area that is sometimes wet and muddy. This is the fourth Eagle Scout boardwalk

project on the trail system in hopes of increasing trail use and providing dry crossings overwet areas.



Boardwalk construction



Boardwalk

- ✓ A one-mile trail addition was built with cooperation from Harley-Davidson Financial Services, Starbucks Carson Valley Roasting Plant and Distribution, and The Nature Conservancy. This new trail connects the northwest corner of the south loop with the southwest corner of the north loop, providing a middle loop opportunity that travels along meadows and willow areas near the Carson River. This will hopefully encourage more people to use the trail system with loop opportunities. The trail currently receives very little trail use.



Middle loop trail work day

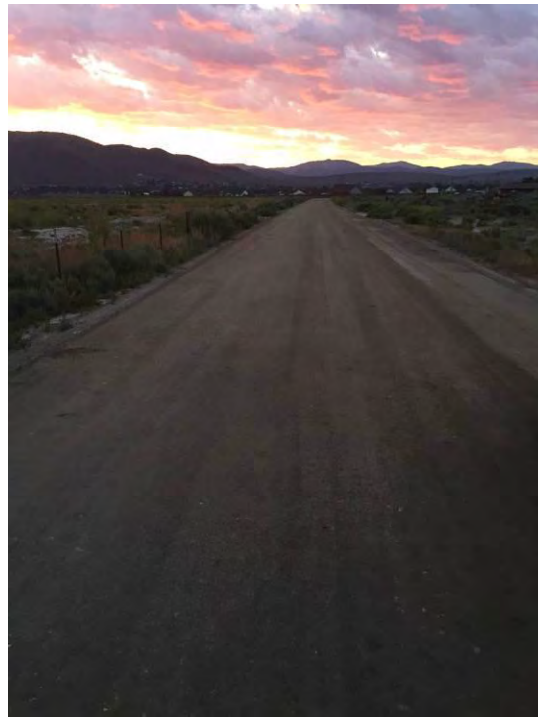


View from new trail section

- ✓ The $\frac{1}{4}$ mile access road to the trailhead was improved. 1 $\frac{1}{2}$ " gravel base was brought in and compacted by A & A Construction, Inc. This will help prevent rutting and ponding that made driving to the trailhead impassable when wet, prevent vehicles from getting stuck and improve access to the trailhead.



Before gravel base



After gravel base

- ✓ New fiberglass markers and arrow stickers were posted on the new trail section. Most of the existing arrow stickers on the trail system were also replaced.



New sign stickers

- ✓ A trailhead sign was installed eastbound at the junction of Heybourne Road and Stephanie Way. A second trailhead sign was also installed at the junction of Heybourne Road and the trailhead access road. These signs help direct people to the trailhead and will hopefully bring awareness to this very seldom used trail.



Stephanie Way/Heybourne Road



Heybourne Road/Trail access road

- ✓ Multiple work days were spent brushing out the trail system.

2016 Overview-Clear Creek Trail System:

- ✓ A 300-foot trail realignment was completed just above Jacks Valley Road TH primarily to improve trail flow and avoid the ongoing rutting from water running down the old road segment.
- ✓ A climbing turn about a ¼ mile above Jacks Valley Road TH had its radius widened to improve turning ability for bikers and equestrians.
- ✓ A 75-foot trail realignment was completed about a half mile above Jacks Valley Road Trailhead to broaden a turning radius for bikers.
- ✓ A 40-foot realignment about ¼ mile below Knob Point was done primarily to improve sight line and increase the turning radius around a small ridge.
- ✓ A 150-foot realignment on the east side approach to the main road crossing (just before the bridge) was done to better align the trail crossing the road.



Trail realignment of road crossing

- ✓ A short bridge was installed over South Fork Clear Creek as a bypass route for hikers and bikers. The existing, adjacent natural crossing remains open for equestrian users, as well as those hikers and bikers who enjoy getting wet.



South Fork Clear Creek bridge

- ✓ The entire trail system was brushed out a couple times. Much of the upper half

involved removing manzanita roots that were not entirely removed during initial construction.

- ✓ Five fallen trees were cut and removed from the trail.

2016 Overview-Fay-Luther/Jobs Peak Ranch Trail System:

- ✓ An 1,100-foot realignment on the Lonesome Trail was completed as an alternative route option to avoid going down and back up a steeper old road section.



Lonesome Trail route option



Equestrian on new Lonesome Trail

- ✓ A 600-foot realignment on the Interpretive Loop was completed to reduce grade and remove the trail off a rutting section. The old trail was seeded and decommissioned.
- ✓ A 2,100-foot realignment was completed on the Grand View Loop to reduce grade and avoid a steep, rutted old road section.



New section of Grand View Loop

- ✓ Waterbars were reinforced on much of the old road segments of the trail system. A large drain was installed just above the Fay-Luther kiosk to divert water off the trail and trailhead. The entire Sandy Trail is an old road and all fall line that often becomes a wash or rutted out.



Waterbar

- ✓ Updated trail maps were installed on the kiosk and Interpretive Trail to reflect alignment and mileage changes.

- ✓ Several embedded rocks were removed from the trail south of the Valley View junction.
- ✓ Three fallen trees were cut and removed.
- ✓ A 12-foot bridge was installed on the south creek crossing on the FLJPR Trail. The old log crossing was collapsing and reused as benches next to the new bridge. The old rock crossing was incising, becoming slippery and steep to cross for trail users. A short trail realignment was also completed with the new bridge location.



New bridge on FLJPR Trail



Relocating old log bridge for benches

- ✓ Many trails were brushed out including the Sandy Trail, Interpretive Loop, Grand View Loop, Bitter Cherry Trail, Jeffrey Pine Trail and parts of the FLJPR Trail and Valley View Loop.



Brushing the Interpretive Loop



Brushing beginning of the Sandy Trail



Brushing the Grand View Loop

- ✓ An Eagle Scout completed his project with family and troop members, refurbishing the Fay-Luther Trailhead Kiosk. It was sanded and repainted. Missing shingles were replaced.



Fay-Luther Kiosk refurbished

2016 Overview-Genoa Trail System:

- ✓ The road bypass directly above Eagle Ridge Trailhead was completed.



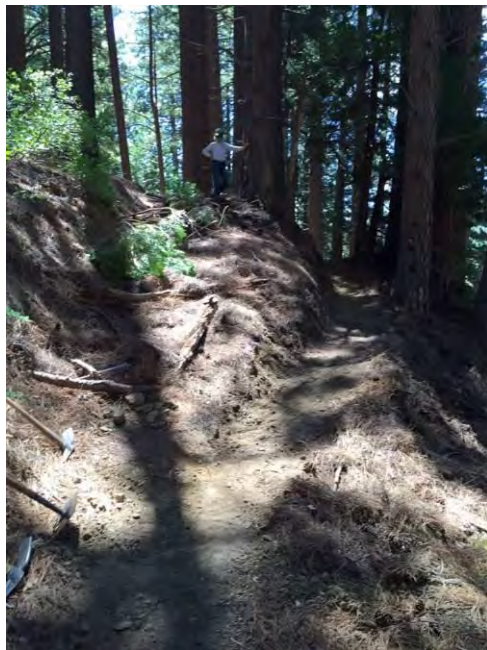
New trail bypass above Eagle Ridge TH

- ✓ The entire 17-mile Genoa Trail System was cleared of rock falls.
- ✓ Updated trail maps were installed on the kiosks to reflect alignment and mileage changes over the past four years.
- ✓ Seven fallen trees were cut and removed from the trail.



Fallen tree removed

- ✓ Seven realignments were completed on the Sierra Canyon Trail ranging from 50-635 feet to reduce steep grades.



Steep trail section decommissioned



New trail alignment and turn

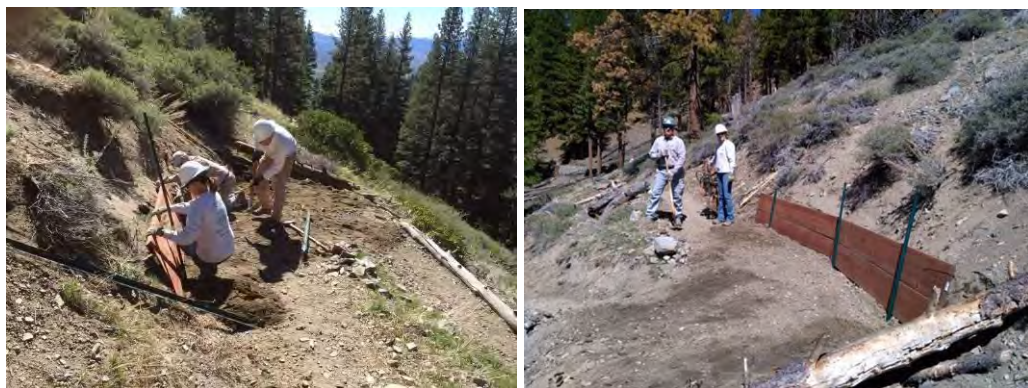
- ✓ A new alignment of the upper Sierra Canyon Creek crossing on the Genoa Loop was completed. The old crossing route was kept open to provide a short loop

option. The new trail route is a better grade and the creek crossing is easier to cross. Bikers no longer need to dismount to lift bikes over the creek.



New upper Sierra Canyon creek crossing

- ✓ A new t-post support wall was installed at the switchback before the spring on the Sierra Canyon Trail. This wall stabilizes and catches sloughing soils, and helps protect the switchback.



New support wall on turn

- ✓ The lower 2 miles and the upper 1.5 miles of the Sierra Canyon Trail were brushed out. The roses and nettles around the lower Genoa Canyon Creek crossing area were also brushed out.



Lower Sierra Canyon Trail brushing



Upper Sierra Canyon Trail brushing

- ✓ One of the Genoa Canyon support walls was cleaned out and rebuilt



Rebuilt support wall

- ✓ A new Lexan panel was drilled and installed on the Eagle Ridge Kiosk. New hinges and locks were also replaced. The kiosk had been vandalized.



New Eagle Ridge kiosk panel and hinges

- ✓ The Eagle Ridge Kiosk, Sierra Canyon Kiosk and both West Fork Trail Kiosks were all oiled with linseed oil to help protect the wood.

2016 Overview-Pinyon Trail:

- ✓ The entire trail had general trail maintenance done. Most of the work involved chipping rocks in the trail tread to remove sharp protrusions.

2017 Work Plan-Bently Ranch Trail:

- ✓ New trail maps will be installed at some of the trail junctions to help identify one's location within the trail system.
- ✓ Routine annual brushing will occur throughout the trail system.

- ✓ One or more additional boardwalk sections may be installed at areas that are sometimes wet in a typical year.
- ✓ Additional improvements to the trailhead access road may occur, such as adding a larger diameter rock base, to further stabilize the road.
- ✓ Portions of trail may need rebuilt due to potential flood damage.

2017 Work Plan-Clear Creek Trail:

- ✓ Routine tread maintenance and brushing will occur throughout the trail system.
- ✓ Additional trail work will occur where the trail crosses the emergency access road on private land. Recent changes to the road design and general drainage flow patterns have impacted a few short trail sections negatively. Modifications to the trail alignment will occur to address these upslope changes.
- ✓ The Clear Creek Connector Trailhead may finally be constructed this year.

2017 Work Plan-Fay-Luther/Jobs Peak Ranch Trail System:

- ✓ Routine tread, brush and waterbar work will occur throughout the trail system.
- ✓ Improvements to the Fay-Luther Trailhead parking surface may occur.
- ✓ Improvements to the creek crossing and cable step area may occur.

2017 Work Plan-Genoa Trail System:

- ✓ Routine tread maintenance and brushing will occur throughout the trail system.
- ✓ Updated trail mileage signs will be installed to reflect alignment and mileage changes over the past four years.

- ✓ Areas receiving flood damage from heavy water runoff through drainages will have ongoing repairs.

2017 Work Plan-Pinyon Trail:

- ✓ Routine tread maintenance will occur, mostly rock work.